

## ISCOM HT803 GEAPON Optical Network Unit

ISCOM HT803 is a client-side GEAPON Optical Network Unit device fully integrating GEAPON and switch technology. It is designed to access residential and business subscribers into PON network with designed handsome plastic shell. The device can be directly placed at home of terminal user for FTTH solution, supporting data and IPTV services.

ISCOM HT803 provides one single strand PON interface, 4\*10/100M Ethernet interface for accessing subscriber's gateway or computer. Together with Raisecom OLT device, it provides full L2 switching functionality for high speed data, IP phone and IPTV services, can be remotely monitored and managed through OLT device and GUI Nview NNM system. The whole GEAPON system is ideal solution for carriers to deploy packet switching network with limited fiber resource.

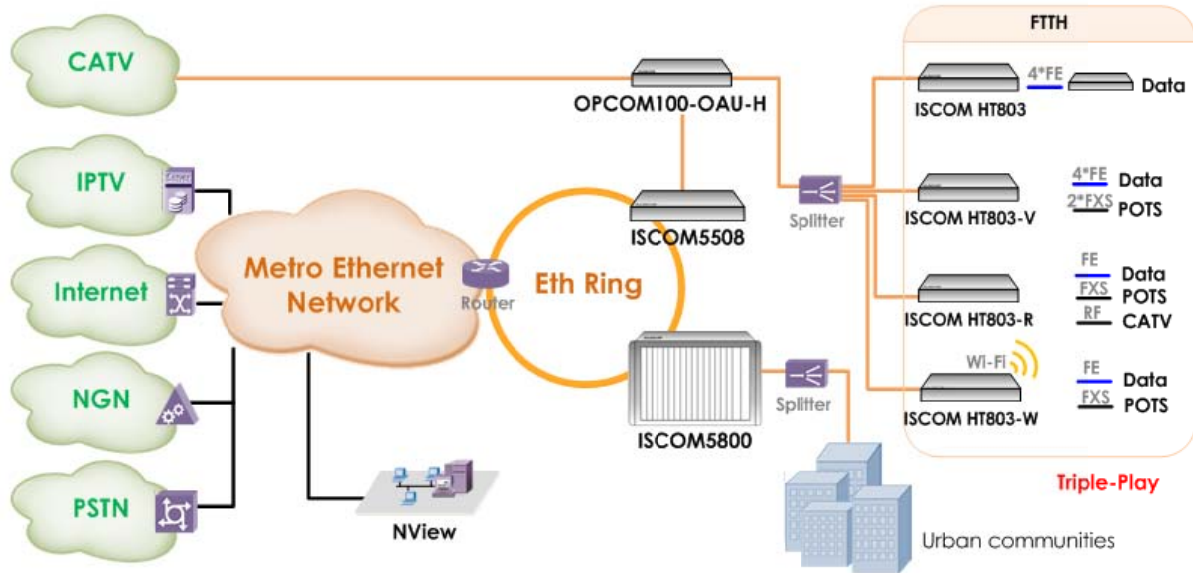


ISCOM HT803

### Highlights

<b>Plastic Shell ONU</b>	Plastic Shell ONU with low weight for FTTH.
<b>Plug and Play</b>	Based on automatic discovery and configuration of ONU "Plug and Play",
<b>Config management</b>	Support configuration upload, download, save, renew default, backup .etc
<b>Link diagnostic</b>	Optical link measurement and diagnostic on PON network. Diagnosed parameter: TX power, RX power, Temperature, P3V3 supply voltage, Transfer Distance, Warning threshold etc. Support the power supply of optical module shutdown function. Dying gasp and alarm reporting. Loop back detection for avoiding storms caused.
<b>Multiform Management</b>	Local management through console port Remote management through SNMP and Telnet, SNMP V1/V2/V3 GUI NMS user-friendly interface IEEE802.3 standard OAM, extended 802.3ah OAM ONU devices can be remotely managed by OLT
<b>Performance Management</b>	Performance component of GUI NMS support remotely monitored the entire network, monitor traffic flow stat. of Ethernet/PON port, CPU utilization etc.

## Typical Application



## Key Features

Forwarding mode	Store and Forward
Max frame size	1518, 1596 Bytes
Security	Bi-directional AES-128 encryption, triple churning
ARP	Support ARP protocol
Storm control	Support storm control of broadcast, multicast and DLF
Flow control	IEEE802.3x in full duplex, back pressure in half duplex
Port mirror	Port mirror based on ingress and egress per port
Spanning tree	RSTP for improving network resiliency
Loopback detection	Loop back detection for avoiding storms caused
Port Isolation	Support different ethernet ports intercommunication enable or disable protecting the ports
MAC address table	1K MAC addresses table capacity
VLAN	IEEE802.1Q, double tagging (Q-in-Q), 64 active VLAN, IEEE802.1ad
Port rate limitation	Support upstream Service Level Agreement Upgradeable dynamic DBA algorithm Rate-limiting on Ethernet and PON interface



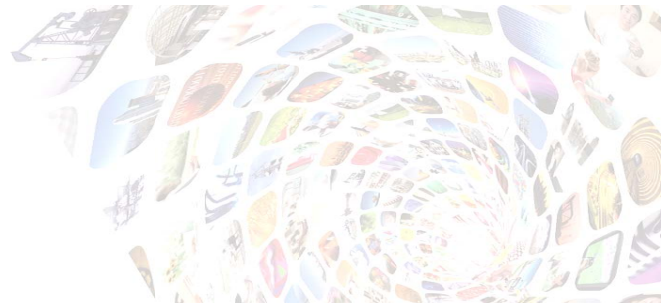
<b>QoS &amp; ACL</b>	Up to 4 output queues Strict Priority forwarding(SP) scheme, weighted round robin(WRR), SP+WRR Support L2 - L4 packet filtering, classify and attemper
<b>Port isolation</b>	Support different Ethernet ports intercommunication enable or disable protecting the ports
<b>DHCP &amp; PPPoE</b>	DHCP Snooping, PPPoE Relay, PPPoE Relay
<b>Multicast</b>	IGMP Snooping V1/V2/V3, Transparent Multicast address table capacity 128

## Specifications

<b>GEPON Interface</b>	1 GEPON interface, 1000BASE-PX20+ SC/PC connector 1310nm burst receive 1490nm continuous transmit Symmetric 1.25Gbps 20km distance Split ratio: Max. 1:64
<b>Ethernet Interface</b>	4*10/100M auto-negotiation RJ45 connector Full/half duplex mode Auto MDI/MDI-X 100m distance
<b>Serial port configuration</b>	9600bps/8bit/none parity/1 stop bit
<b>Dimension</b>	180(W)*39(H)*123(D) mm
<b>Weight</b>	<1.0kg
<b>Power supply Power consumption</b>	External 12V power supply adapter ≤ 10W (at max load)
<b>Working environment</b>	Temp: 0~40 centigrade RH: 10~95% non-condensing
<b>Storage environment</b>	Temp: -40~70 centigrade RH: 5~95% non-condensing

## Compliances

<b>Standards &amp; protocols</b>	IEEE802.3 IEEE802.3ah IEEE802.3u IEEE802.3ab IEEE802.3z IEEE802.3x IEEE802.1p IEEE802.1Q
----------------------------------	---



## Ordering Information

**ISCOM HT803**      Optical Network Unit of GEAPON system, provides 4\*10/100Base T interface and 1\*PON interface for uplink, external12V power supply adapter.

## Appendix Specification of PON interface

Optical Connector	Wavelength (nm)	Rx sensitivity (dBm)	Tx Power (dBm)	Typical distance (km)	Overload point (dBm)
SC/PC	1310	>-27	-1~+4	20	>-3dBm